

**Winter**  
2025

COLUMBIA PATHOLOGY  
AND CELL BIOLOGY **REPORT**

**Reflections**

**Staff Spotlight**

Retirements and Marathons

**In Memoriam**

Remembering Dr. Karl H. Perzin, MD:  
A Legacy of Excellence

**Event Spotlight**

Inaugural Research Symposium



## IN THIS ISSUE

- 3 Letter From Leadership
- 5 Pathology in Columbia Media
- 7 Education: Honors and Awards
- 8 Staff Spotlight: Fond Farewell to Irene D'Silva
- 9 Staff Spotlight: Melanie Runs a Marathon
- 11 Hightlighted Event: Inaugural Research Symposium
- 12 In Memoriam: Karl H. Perzin, MD
- 13 Staff Spotlight: Anniversaries

### Columbia Pathology and Cell Biology Report

#### Chair

Kevin L. Gardner, MD, PhD  
Donald W. King, M.D. and Mary Elizabeth King,  
M.D. Professor of Pathology and Cell Biology  
Chair, Department of Pathology and Cell Biology  
Pathologist-in-Chief, CUIMC

#### Department Administrator/CFO

Joann Li, MPA, MPH

#### Editor and Layout Designer

Milan Fredricks

#### Copy Editor and Webmaster

Ping Feng

#### Content Reviewers

Melissa Carter  
Taisha Lember  
Ping Feng

#### Photo Contributors

Joann Li  
Taisha Lember  
Casey Schadie

#### Address correspondence to:

PCB Reports, Editor  
c/o Milan Fredricks  
Columbia University  
Department of Pathology and Cell Biology  
630 W. 168th St., Box 23  
New York, NY 10032  
Email: PathNews@cumc.columbia.edu

**General E-mail:** [pathology@columbia.edu](mailto:pathology@columbia.edu)

**Website:** <https://pathology.columbia.edu>



## Reflections and Opportunities Ahead



As winter envelops us, it's the perfect time to reflect on where we've been and envision the road ahead. This season marks over a year of dynamic leadership under Dr. Kevin Gardner, a period characterized by transformative initiatives that continue to shape our department. These efforts—from the implementation of a new faculty compensation model and digital pathology advancements to revitalizing our research programs, hosting our first-ever retreat, and advancing precision medicine—underscore our collective commitment to innovation, excellence, and growth.

Reflecting on my 35 years in this department, I'm struck by how much has changed. When I first joined Columbia, the landscape of pathology was vastly different. I mean, I remember when *the* cutting-edge technology was the introduction of personal computers! We've come a long way since floppy disks, haven't we? Despite the rapid pace of change, one thing has remained constant: our resilience and dedication.

While change is a constant, so too is our ability to adapt. The arrival of this country's new administration inevitably brings uncertainties, whether in funding, health policies, or regulatory landscapes. At CUIMC, we're also navigating capital projects, plans for clinical practice expansion, the development of a new graduate education academic training model, funds flow redesign, and significant shifts in administrative business practices. But if there's one thing I've learned, it's that this team has the grit and creativity to handle whatever comes our way—curveballs and all.

Our strength lies not only in our technical and scientific advances but also in our commitment to well-being and community. In the past year, we've made great strides in building connections within our department. The efforts of our well-being committee, the Employee Resource Group (ERG) engagements, retreats, holiday celebrations, and other department-wide events have helped us foster a stronger sense of community. It's also been inspiring to see so many of you celebrate personal milestones—whether it's marathons completed, graduations, or other achievements—each of these moments reminds us of the importance of balancing our professional lives with personal joy.

Looking ahead, we stand on the brink of a new era in pathology. The integration of artificial intelligence and machine learning into digital pathology is not just a possibility; it's already happening. These technologies promise to revolutionize how we practice, teach, and conduct research. With several faculty recruitments underway and strategic investments in partnership with the medical school and NYP, our department is stepping boldly into a future filled with opportunity.

As we embrace these exciting developments, let's remember that our success is built on both our individual efforts and our collective strength as a team. Take a moment to celebrate how far we've come and look forward to what lies ahead. Thank you for your dedication, creativity, and camaraderie—qualities that make this department truly exceptional. Here's to a bright 2025 filled with discovery, collaboration, and meaningful achievements that we can all be proud of!

Warm regards,

*Joann Li*

Department Administrator,  
Department of Pathology and Cell Biology

## STAFF SPOTLIGHT: FACULTY

## Honors and Awards

**Steven Spitalnik Receives 2024 AABB President's Award**

[Steven Spitalnik, MD](#), Professor of Pathology and Cell Biology, was honored with the 2024 AABB President's Award during the General Session of the 2024 AABB Annual Meeting in October 2024. The AABB President's Awards are presented annually, with recipients chosen each year by the AABB president. This honor recognizes "extraordinary public service and contributions of an individual or organization in the healthcare field," and recipients are acknowledged for work that "advances AABB's goals and mission." Dr. Spitalnik was selected for his "extraordinary dedication and service throughout a remarkable career in advancing AABB's mission of improving lives by making transfusion medicine and biotherapies safe, accessible, and effective worldwide." Congratulations, Dr. Spitalnik.



[W. Ian Lipkin, MD](#), professor of epidemiology, neurology, and pathology and cell biology, received the [2025 Distinguished Alumnus Award](#) from the University of Chicago Laboratory Schools.

Source: CUIMC Updates

## Faculty Promotions



[Catherine Clelland, PhD](#) was promoted to Associate Professor of Pathology and Cell Biology (in the Taub Institute for Research on Alzheimer's Disease and the Aging Brain) at CUMC

## Useful Information

**Updating online faculty profiles** – Regularly updating your faculty profile is strongly encouraged. Department faculty can update their profiles by submitting a ticket via the [Pathology Web Request Form](#).

**Updating website content**– If you find any outdated, incorrect, or missing content on our department website ([www.pathology.columbia.edu](http://www.pathology.columbia.edu)), please let us know by submitting a [website support request](#).

**Submit news content (website/intranet/digital screens)** – Have interesting content (research, events, people, honors and awards, celebrations, etc.) that you wish to post on the department website or intranet, please contact Path News at [pathnews@cumc.columbia.edu](mailto:pathnews@cumc.columbia.edu).

## STAFF SPOTLIGHT: FACULTY

## Pathology in Columbia Media

## Is Raw Milk Safe to Drink?

Source: ColumbiaDoctors



While proponents argue that raw milk offers health benefits, scientists and medical professionals express clear concerns about its safety. It's important to understand the facts when deciding whether to stick with conventional pasteurized milk or to try raw milk.

"Raw milk can contain harmful bacteria that can cause serious illnesses, which have been successfully avoided by pasteurization for over a century," says Columbia clinical microbiologist [Gregory Berry, PhD](#). He believes that the advantages of raw milk do not outweigh the associated risks and explains why.

For the full story, visit the [ColumbiaDoctors newsroom](#).



## Columbia Biobank Expansion Set to Pay Dividends

Source: CUIMC Newsroom



With the opening of the centralized biobank, known as the BRIDGE facility, a joint effort by researchers and staff in the Irving Institute, the Department of Pathology & Cell Biology, and the Office for Research, Columbia will be able to house up to 12 million patient samples connected with health data to accelerate medical discovery. Read the full story at the [CUIMC Newsroom](#).



WANT TO  
CONTRIBUTE TO THE  
NEXT NEWSLETTER?

SEND YOUR SUBMISSIONS TO  
[PATHNEWS@CUMC.COLUMBIA.EDU](mailto:PATHNEWS@CUMC.COLUMBIA.EDU)



## RESEARCH

## Recent Grants

Source: CUIMC Update



[Ottavio Arancio, MD, PhD](#), professor of pathology and cell biology (in the Taub Institute for Research on Alzheimer's Disease and the Aging Brain), was awarded \$271,290 over three years for a sub-award from the National Institute on Aging for "***A new perspective on the role of extracellular vesicles in Alzheimer's disease.***"



[Syed Hussaini, PhD](#), assistant professor of pathology and cell biology (in the Taub Institute for Research on Alzheimer's Disease and the Aging Brain), was awarded \$2,075,564 over three years from the National Institute on Aging for "***The role of neuronal hyperexcitability and proteostasis in Alzheimer's disease.***"



[W. Ian Lipkin, MD](#), professor of epidemiology, neurology, and pathology and cell biology, was awarded \$2,700,000 over two years from the Department of Veterans Affairs for "***Blood and plasma sample analyses and consultation on the interpretation of resulting data for a multisite research project, centered in Madison, WI.***"



[Mahesh Mansukhani, MD](#), professor of pathology and cell biology at CUMC, and Suzanne Lentzsch were awarded \$896,099 over five years for a subaward from the National Cancer Institute for "***Screening for AL Amyloidosis in Smoldering Multiple Myeloma.***"



[Serge Przedborski, MD, PhD](#), professor of neurology (in pathology and cell biology and neuroscience) was awarded \$1,493,233 over three years from the Army Medical Research and Materiel Command for "***Gene therapy in a nonhuman primate model of cognitive defects in Parkinson's disease.***"



[Markus Siegelin, MD](#), associate professor of pathology and cell biology, was awarded \$452,375 over two years from the National Institute of Neurological Disorders and Stroke for "***Targeting OGDH for Glioblastoma Therapy.***"



[Clarissa Waites, PhD](#), associate professor of pathology and cell biology and neuroscience, was awarded \$452,375 over two years from the National Institute on Aging for "***A pulse-labeling assay to track extracellular vesicle spreading in the brain.***"



[Lori Zeltser, PhD](#), professor of pathology and cell biology, was awarded \$505,388 over one year from the Office of The NIH Director for "***Zeiss LSM 900 with Airyscan 2.***"



[Shan Zha, MD, PhD](#), professor of pediatrics, pathology and cell biology, and of microbiology and immunology (in the Institute for Cancer Genetics and in the Herbert Irving Comprehensive Cancer Center) was awarded \$3,045,584 over five years from the National Cancer Institute for "***The role of HPF1 in radiation and genotoxic cancer therapy.***"

## EDUCATION: RESIDENCY AND FELLOWSHIP PROGRAMS

## Honors and Awards



Congratulations to Zhe Zhu, a PGY2 resident, who has been awarded the **Pathologist-in-Training Travel Award** for the upcoming USCAP 2025 Annual Meeting in Boston, MA.

## Recent Resident Publications

- [Gynecologic and breast cancers with hereditary cancer predisposition syndromes.](https://doi.org/10.1016/j.hpr.2024.300764) Courtney F. Connelly, Sudarshana Roychoudhury, Yan Peng, Hua Guo, Roshni Rao. **Human Pathology Reports Volume 38**, November 2024, 300764. <https://doi.org/10.1016/j.hpr.2024.300764>
- [Infiltrating plasma cells maintain glioblastoma stem cells through IgG-Tumor binding.](https://doi.org/10.1016/j.ccell.2024.12.006) Gao J, Gu D, Yang K, Zhang J, Lin Q, Yuan W, Zhu X, Dixit D, Gimple RC, You H, Zhang Q, Shi Z, Fan X, Wu Q, Lu C, Cheng Z, Li D, Zhao L, Xue B, Zhu Z, **Zhu Z**, Yang H, Zhao N, Gao W, Lu Y, Shao J, Cheng C, Hao D, Yang S, Chen Y, Wang X, Kang C, Ji J, Man J, Agnihotri S, Wang Q, Lin F, Qian X, Mack SC, Hu Z, Li C, Taylor MD, Li Y, Zhang N, Rich JN, You Y, Wang X. **Cancer Cell**. 2025 Jan 13;43(1):122-143.e8. doi: 10.1016/j.ccell.2024.12.006. Epub 2025 Jan 2. PMID: 39753140
- [Left inferior phrenic arterial malformation mimicking gastric varices: A case report and review of literature.](https://doi.org/10.4240/wjgs.v16.i9.3057) Wang H, Tan YQ, Han P, Xu AH, Mu HL, Zhu Z, Ma L, Liu M, Xie HP. **World J Gastrointest Surg**. 2024 Sep 27;16(9):3057-3064. doi: 10.4240/wjgs.v16.i9.3057 PMID: 39351559
- [FTO-mediated DSP m6A demethylation promotes an aggressive subtype of growth hormone-secreting pituitary neuroendocrine tumors.](https://doi.org/10.1186/s12943-024-02117-5) Zou Y, Bao X, Li D, Ye Z, Xiang R, Yang Y, **Zhu Z**, Chen Z, Zeng L, Xue C, Zhao H, Yao B, Zhang Q, Yan Z, Deng Z, Cheng J, Yue G, Hu W, Zhao J, Bai R, Zhang Z, Liu A, Zhang J, Zuo Z, Jiang X. **Mol Cancer**. 2024 Sep 20;23(1):205. doi: 10.1186/s12943-024-02117-5. PMID: 39304899
- [Cardiac Imaging, Histopathologic, and Electrical Correlation of Ventricular Tachycardia Isthmus Substrate in Desmoplakin Cardiomyopathy.](https://doi.org/10.1016/j.jacep.2024.06.021) Rahman A, **Zhu Z**, Lerman BB, Sekulic M, Cheung JW. **JACC Clin Electrophysiol**. 2024 Sep;10(9):2111-2115. doi: 10.1016/j.jacep.2024.06.021. Epub 2024 Aug 14. PMID: 39152966
- [Suppressing PD-L1 Expression via AURKA Kinase Inhibition Enhances Natural Killer Cell-Mediated Cytotoxicity against Glioblastoma.](https://doi.org/10.3390/cells13131155) Nguyen TTT, Gao Q, Mun JY, **Zhu Z**, Shu C, Naim A, Rogava M, Izar B, Westhoff MA, Karpel-Massler G, Siegelin MD. **Cells**. 2024 Jul 6;13(13):1155. doi: 10.3390/cells13131155. PMID: 38995006
- [IFI35 regulates non-canonical NF-κB signaling to maintain glioblastoma stem cells and recruit tumor-associated macrophages.](https://doi.org/10.1038/s41418-024-01292-8) Li D, Wang X, Chen K, Shan D, Cui G, Yuan W, Lin Q, Gimple RC, Dixit D, Lu C, Gu D, You H, Gao J, Li Y, Kang T, Yang J, Yu H, Song K, Shi Z, Fan X, Wu Q, Gao W, **Zhu Z**, Man J, Wang Q, Lin F, Tao W, Mack SC, Chen Y, Zhang J, Li C, Zhang N, You Y, Qian X, Yang K, Rich JN, Zhang Q, Wang X. **Cell Death Differ**. 2024 Jun;31(6):738-752. doi: 10.1038/s41418-024-01292-8. Epub 2024 Apr 9. PMID: 38594444
- [Anti-immunoglobulin E provides an additional therapy to conventional steroids for Kimura's disease.](https://doi.org/10.1111/1346-8138.17021) Ao S, Huang G, Tang X, **Zhu Z**, Han J, Wang F, Zhai W. **J Dermatol**. 2024 Apr;51(4):602-606. doi: 10.1111/1346-8138.17021. Epub 2023 Nov 10. PMID: 37950550s11523-024-01097-2. Online ahead of print.PMID: 39271577



## STAFF SPOTLIGHT: MILESTONES &amp; ACHIEVEMENTS

**A Fond Farewell to Irene D'Silva**

Irene D'Silva has dedicated 40 years to supporting sponsored research grants for Pathology and Cell Biology faculty at CUIMC. As of January 31, 2025, she will be retiring after an extraordinary four decades of service, leaving a lasting impact on our department.

As a grants manager, Irene has expertly overseen the grants portfolios for department faculty, ensuring smooth budget allocations, compliance, and support for countless research endeavors. Her dedication has helped shape the success of many faculty members and research teams over the years.

Beyond her professional expertise, Irene has been a cornerstone of our department's culture. Always ready with a smile, a quick chat, and a genuine concern for her colleagues' well-being, she has fostered a sense of warmth and camaraderie that will continue to resonate long after retirement. Her contributions have immeasurably enriched the culture of her team and the department, and the standards of professionalism, kindness, and collaboration she has set will inspire us for years to come.

This sentiment is echoed by Josefa Salcedo, a fellow grants manager who has been Irene's team member for many years. "I could say so many things about Irene as a colleague, like her commitment and dedication. However, the values she possesses as a person radiate more. Irene is so generous in spirit, which she conveys with a strong will. She gives wholeheartedly to all she holds dear, and I am truly proud to know her as my colleague and friend."

While she has more than earned her retirement, Irene will be deeply missed. Though we won't have her daily presence, her positive influence will remain. We wish her all the absolute best in this next phase of life and sincerely hope she remains a part of the extended Pathology and Cell Biology community. Congratulations, Irene, and thank you for sharing the last 40 years with us!



**Left:** The "OG" grants team (from left) Frances Antonetty, Josefa Salcedo, Irene D'Silva, Moises Oliveras, and Steve Russo at Irene's farewell dinner.

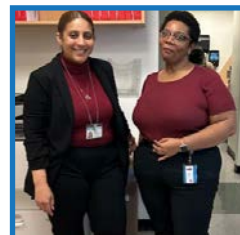
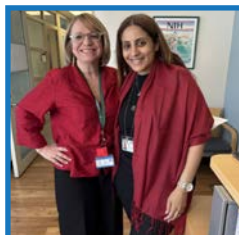
**Right:** The people who worked closely with Irene celebrating her 40 years with Pathology.



## PATHOLOGY IN SNAPSHOT

**The Mystery of the Matching Colleagues:** Sometimes, you show up to work in an outfit that eerily resembles your coworker's. Ooooh, spooky!

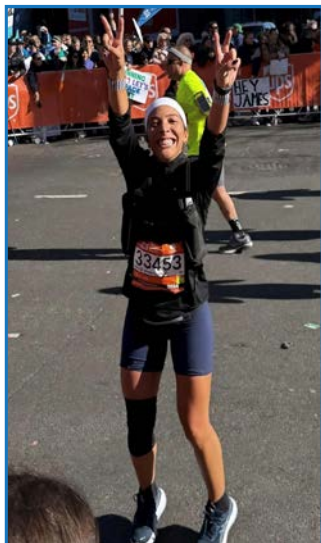
**The Case of the Dueling Deux in Red and Black** - featuring (1st image, from left) Joann Li (Dept. Administrator) and Taisha Lember (Manager, Research and Training Programs) and (2nd image, from left) Taisha Lember and Milan Fredricks (Strategic Communications Manager)





## STAFF SPOTLIGHT: MILESTONES &amp; ACHIEVEMENTS

## 26.2 Miles of Memories: A Tribute Run for a Beloved Coach



Melanie is all smiles at mile 16

On November 3, 2024, Melanie Rodriguez (administrative aide, research and clinical procurement) participated in the New York City Marathon, crossing the finish line with an impressive time of 4:55:25. She ran in support of [Team for Kids](#), a charity that funds New York Road Runners (NYRR) youth and community programs across New York City's five boroughs.

"I chose to fundraise for *Team for Kids* because I relate to their mission, having been a high school and college athlete myself," Melanie explained. The organization's motto, "We run so kids can," resonates deeply with her. "I believe it's important for kids to have access to as many athletic programs as possible. Running helped me build self-confidence as a teenager and young adult. It also serves as an emotional outlet, allowing me to clear my mind and de-stress."

One of the most memorable moments of the marathon for Melanie was passing her old high school, the very place where she first discovered her love for running. Not long after committing to the marathon, Melanie received the heartbreaking news that her high school track and cross-country coach had passed away. She dedicated her race in her coach's honor, setting a personal goal to complete the marathon and wear her medal to the memorial service, which took place a week later. Running 26.2 miles is as much a mental challenge as it is a physical one, and Melanie's personal dedication to her deceased mentor was a catalyst to help her push through.

Looking ahead, Melanie plans to continue running, setting her sights on several half marathons, including the Brooklyn Half Marathon in April. She hopes to build up to another full marathon eventually.

**Left:** Melanie proudly holds her engraved medal, proof of her amazing accomplishment!

**Right:** Melanie at the memorial for her high school track coach, wearing her marathon medal.



Congratulations to Diamond Parks, administrative clerk on the Clinical Administration and Revenue Cycle team, who recently completed her master's in healthcare informatics!



There are many tax advantages to giving appreciated stock to the Department of Pathology and Cell Biology. In donating appreciated securities, you avoid capital gains tax and qualify for a charitable income tax deduction for the full value of the securities. Please visit the [CUIMC Gifts of Securities](#) page for more information. And visit [Pathology and Cell Biology Giving](#) if you'd like more information on how to make a gift to one of our many worthwhile educational or research funds.

## HIGHLIGHTED EVENTS: CUIMC

## 15 Years of Impact: Pathology and Cell Biology Joins the Crown Awards Gala Celebration

On November 18, over 450 benefactors, faculty, and friends of the Columbia University Vagelos College of Physicians and Surgeons (VP&S) community gathered at The Glasshouse in New York City to celebrate the 15th Anniversary Crown Awards Gala. The inspiring evening was a tribute to the power and impact of philanthropy in advancing medical education, research, and patient care. The Department of Pathology and Cell Biology was well represented at this memorable event — see photos below! Learn more about the 2024 Crown Awards Gala [here](#).



Kevin and Donna Gardner



Drs. Steve and Patrice Spitalnik



(From left) Dr. Clarissa Waites, Dr. Ulrich Hengst, and Joann Li



Dr. Michael Miller and Gregory Madrey-Miller



Dr. Tiffany Thomas



From left, middle: Mark Churchland, Dr. Clarissa Waites, and Dr. Ulrich Hengst

## Building Connections: Faculty Club Hosts First-Ever Community Hour

On December 16, the Faculty Club hosted its first-ever Community Hour, designed to allow colleagues to connect in a casual environment and foster a sense of belonging among CUIMC employees. Pathology and Cell Biology staff attended, enjoying the great food, music, and atmosphere with their fellow CUIMC colleagues. If you missed this event, the next event is on February 27! Read the [full article](#) for more.



**Left:** Milan Fredricks (middle) and Joann Li (right) rocking to an energetic "Electric Slide"

**Right:** Milan Fredricks brings the house down with her rousing karaoke performance of Montell Jordan's 1995 classic hit, "This is How We Do It"





## HIGHLIGHTED EVENTS: DEPARTMENT

**A Day of Discovery: Inside the First Pathology and Cell Biology Research Retreat**

On December 12, 2024, our department brought together researchers, faculty, trainees, and students for the inaugural Pathology and Cell Biology Research Retreat at the beautiful New York Botanical Garden. The goal? To spark new ideas, strengthen collaborations, and push the boundaries of our research, with a focus on innovation, knowledge exchange, and professional development.

The all-day event was packed with discussions and discoveries. Researchers explored some of the most pressing challenges in science today, with sessions focused on cell biology, neurodegenerative diseases, metabolism and blood diseases, and cancer. A keynote lecture from Professor Brent Stockwell, Ferroptosis and Metabolism—Mechanisms and Therapeutic Implications, was one of the day's highlights. Beyond the lectures, what made the retreat special was the opportunity for attendees to connect through networking and mentoring conversations or casual discussions over coffee, encouraging faculty and trainees to connect beyond their immediate research circles.



Kevin Gardner gives welcome remarks

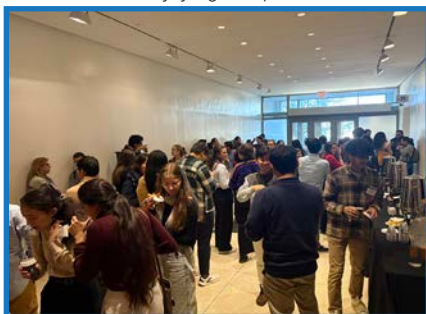
The energy was electric, with 148 attendees in the room, culminating in a poster session with 34 research projects on display. This was more than just a showcase—it was a chance for emerging scientists to share their work, receive feedback, and spur unexpected collaborations. Two students took home top honors for their outstanding research:

- **Jessica Lipponen**, a graduate student in the Pathobiology program, won first place for her poster, *Investigating a Role of Sonic Hedgehog Signaling in Neuronal Stress Resilience*.
- **Albert Hung**, also a Pathobiology graduate student, won second place for his poster, *Understanding Insulin Receptor Trafficking and Sorting Through Insulin Mimetic*.



Casey Schadie & Taisha Lemberth

Attendees enjoying reception



Beyond celebrating individual research achievements, the retreat set a new precedent for cross-disciplinary engagement, reinforcing the department's mission to be a hub for pioneering research. The overwhelmingly positive response from attendees underscored the retreat's success in fostering new scientific inquiries and potential collaborations. Many participants expressed enthusiasm for future department retreats, recognizing its value as a catalyst for further research discovery and innovation.

Taisha Lemberth, administrative manager of research and training programs, who planned the event, echoed this sentiment. "I am incredibly proud of

the event's success and the valuable opportunities it provided for attendees to share their research and connect with peers. It showcased the outstanding work being done and underscored the strong sense of community that defines our department. The positive feedback from participants and the collaborative atmosphere were a testament to the hard work and effort put into organizing the event. Looking ahead, I'm excited about the potential for future retreats and eager to continue supporting the growth and success of our research community."



Poster display

As we look ahead, the relationships built and the knowledge shared at this year's retreat will serve as a foundation for future breakthroughs, ensuring that Pathology and Cell Biology research continues to evolve and make meaningful contributions to the scientific community.



Emily J. Yang (postdoc in the Pon lab) presents



## STAFF SPOTLIGHT: IN MEMORIAM

***Dr. Karl H. Perzin, MD (1933-2025)***

Dr. Karl H. Perzin, a distinguished pathologist, educator, and mentor, passed away on February 7, 2025 at the age of 91 in Oradell, NJ. He was a devoted professor, mentor, and consultant in pathology, leaving an indelible mark on generations of students and medical professionals.

Born on July 18, 1933, in Jersey City, Dr. Perzin received his B.A. from Columbia College in 1954, and earned his medical degree from what is now known as the Columbia University Vagelos College of Physicians and Surgeons, graduating in 1958. He served as a Medical Officer in the United States Public Health Service from 1959 to 1961 before embarking on his long and distinguished career in pathology at Columbia.

Dr. Perzin joined Columbia's pathology department on July 1, 1961, as a first-year resident. Over the course of his career, he rose to become a Professor of Pathology and Cell Biology at Columbia University Medical Center (CUMC) and formally retired in 1998. He was named Professor Emeritus and continued as a consulting pathologist and educator for years thereafter. In all, he dedicated 60 years to Columbia, profoundly contributing to its core missions of education, research, and patient care.

A passionate and influential educator, Dr. Perzin was honored with multiple teaching accolades, including "Teacher of the Year" and "Distinguished Teacher" awards, reflecting his deep commitment to training future pathologists. His teaching left a lasting impact on countless residents and students, many of whom went on to have distinguished careers in pathology.

His unwavering dedication to education and excellence continues to be felt by generations of pathologists. In recognition of his contributions, several awards bear his name, including the Dr. Karl H. Perzin Excellence in Pathology Award, presented to outstanding medical students, and the Dr. Karl H. Perzin Award for Excellence in Anatomic Pathology Teaching, given to faculty members by residents and fellows. These honors celebrate outstanding teaching achievements in pathology and medical education, ensuring his passion for teaching and commitment to excellence will endure for years to come.

Dr. Perzin was also an accomplished academic, publishing over 50 papers in peer-reviewed journals. He co-authored the AFIP Fascicle on Tumors of the Intestines, published in 1990, a significant contribution to the field of pathology. His 1993 study on the premalignant significance of benign proliferative breast diseases remains an important reference in the understanding of breast pathology. His research and scholarly work advanced the knowledge and diagnosis of surgical pathology, cementing his legacy as both a scientist and educator.

In recognition of his extraordinary contributions to pathology and medical education, Dr. Perzin was awarded the College of Physicians and Surgeons Distinguished Service Award in Basic Science in 2016, presented at the medical school's graduation ceremony.

Beyond his professional life, Dr. Perzin had a deep appreciation for the arts, particularly as a devoted patron of the Metropolitan Opera and the New York Philharmonic. His love for music and culture was a testament to his intellectual curiosity and lifelong passion for learning.

Dr. Perzin's legacy is one of excellence, mentorship, and dedication to the field of pathology. He will be fondly remembered by his colleagues, students, and friends as an exceptional physician, an inspiring educator, and a kind-hearted mentor.

## STAFF SPOTLIGHT: ANNIVERSARIES

As of January 2025

**1 Year**

Kalif Billet  
Wai Ting Bu  
Sandye Chauncey  
Emmalene Kurtis  
Chisholme  
Kelvin Fernandez  
Mariya French  
Marquis Fuse  
Daniel Guobadia  
Samir Hasan  
Yao Heng Huang  
Manuel Iglesias  
Sana Jadallah  
Kang Kim  
Lauren Lentz  
Sophia Martin  
Wei Mei Ng Chan  
Michelle Ka-Wai Ng  
Sophie Ross  
Alireza Salem  
Eugene Son  
Liyuan Wang  
Shengnan Xia

**5 Years**

Andrea Alvarez  
Sandy Beato Matos  
Kelsie Bogyo  
Berlady Cancel  
Eunhee Choi  
Adela Cimic  
Michele Disco  
Alan Engler  
Ramonita Ferreira  
Catherine Elizabeth Hall  
Krystalyn Hudson  
Hong Lu  
Ady Lugo  
Yasmeen Majoka  
Sara Elizabeth McKiernan  
Jaewon Min  
Cynthia Nevins  
Lara Pliml  
Jairo Polo Sr.  
Megan Soucy  
Ayesha Sultana  
Arsalan Tariq  
Alison Taylor  
Steven Urra  
Martir Ventura

**10 Years**

Ibrahim Batal  
Susan Ceballo  
Emily Clancy  
Ladan Fazlollahi  
Mythily Ganapathi  
Gunnar Hargus  
Geoffrey Longmore  
Keith Mays  
Beatrice Ruiz  
Dominick Santoriello

**15 Years**

Julie Canman  
Ulrich Hengst  
Edward Kritchevski  
George Mentis  
Yueqing Peng  
Alex Rai  
Anita Sandeva

**20 Years**

Claudia Doege  
Parivash Mikanik  
Leniza Munoz  
Teresa Palomero  
Elizabeth Stone  
Stuart Weisberg

**25 Years**

Dritan Agalliu  
Richard Baer  
Larisa Debelenko  
Ling Kahn  
Edgar Lugo  
Yuehua Mao  
Rey Octaviano  
Lori Zeltser

**30 Years**

Govind Bhagat  
Mahesh Mansukhani  
Moises Olivares  
Sean Reilly  
Jingzi Zhou

**35 Years**

Riccardo Dalla-Favera  
Wei Gu

**40+ Years**

Vivette D'Agati  
Irene Rita D'Silva  
Michael Gershon  
Evelyn Hernandez-Rosa  
John Pintar  
Kathleen O'Toole

**THANK  
YOU**

**PATHOLOGY AND CELL BIOLOGY  
BASIC SCIENCE SEMINAR SERIES**

**MONDAYS  
@12:15PM**

**VIRTUAL & IN-PERSON SEMINARS**



Scan for  
calendar



